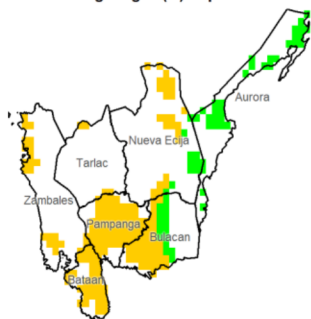


# Region III (Central Luzon)

Water Availability for Rice  
Prevailing Stage : (III) Reproductive



Water Availability for Corn  
Prevailing Stage : None

Harvesting and/or  
pre-planting  
stage is possibly  
ongoing.

## Provincial Values

	Mon. Ave. Rainfall (mm)	Rice CS CCI (%)	Corn CS CCI (%)
Aurora	192.1	I 98.6 I 163.9 II 91.5 II 127.9 III 88.7 III 105.8 IV 128.0 IV 126.8	I 1.2 I 3.4 II 1.1 II 1.8 III 1.0 III 1.2 IV 2.2 IV 1.8
Bataan	18.5	I 41.1 I 63.6 II 37.8 II 45.6 III 36.3 III 35.8 IV 56.0 IV 45.1	I 39.5 I 80.3 II 36.6 II 62.7 III 35.3 III 52.2 IV 52.3 IV 62.1
Bulacan	167.2	I 6.8 I 19.3 II 5.9 II 11.1 III 5.5 III 7.5 IV 11.7 IV 10.9	I 2.4 I 7.4 II 2.1 II 4.2 III 2.0 III 2.8 IV 4.4 IV 4.1
Nueva Ecija	95.5	I 4.8 I 15.9 II 4.3 II 10.1 III 4.0 III 7.2 IV 8.0 IV 9.9	I 4.8 I 15.9 II 4.3 II 10.1 III 4.0 III 7.2 IV 8.0 IV 9.9
Pampanga	44.6		
Tarlac	32.8		
Zambales	26.8		

Crop Stage (CS) highlighted in **bold** is the dominant stage during the month of March

Rice CS:  
(I) Nursery  
(II) Vegetative  
(III) Reproductive  
(IV) Ripening

Corn CS:  
(I) Establishment  
(II) Vegetative  
(III) Reproductive  
(IV) Maturity

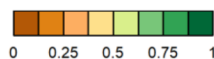
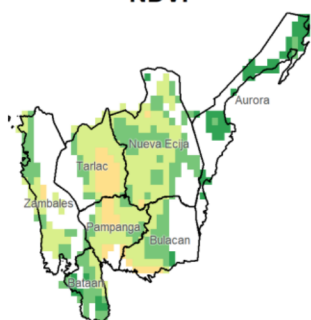
CCI Category:  
Inadequate  
Sufficient  
Excess

## Regional Summary

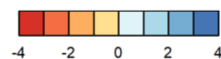
The rainfall was inadequate for most of the farm areas in the Region, except in Aurora during their Reproductive stage. The NDVI shows slightly stressed vegetation in some areas of Zambales, Tarlac, Pampanga and Bulacan. Meanwhile, the SPEI3 shows slightly above normal moisture conditions during the past three months over some part of Nueva Ecija, Pampanga, Tarlac, Zambales and Bataan while Aurora and Bulacan received above normal moisture conditions.

The RX1day indicates rainfall amount from 50 to 100 mm and the RX5day also reported from 50 to 200 mm of rainfall during the month especially in the extreme portion of eastern Bulacan and northeast portion of Aurora which could help the crops to grow during their reproductive stage.

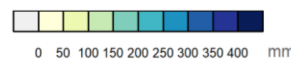
NDVI



SPEI3 (Jan-Feb-Mar)



RX1day



RX5day

